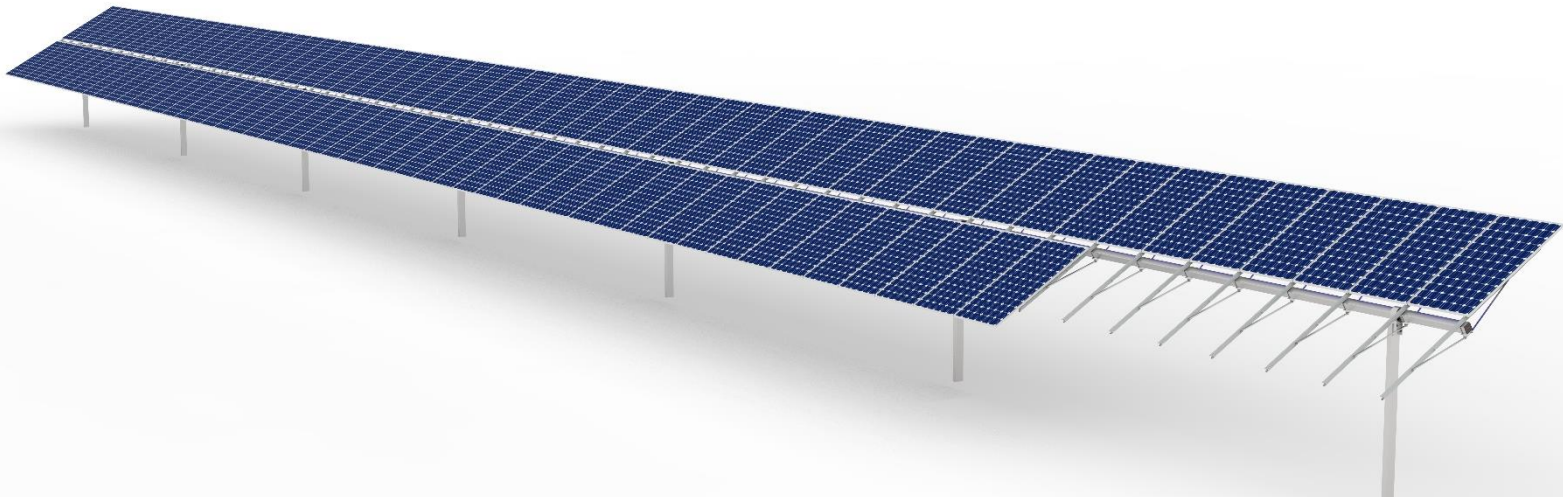
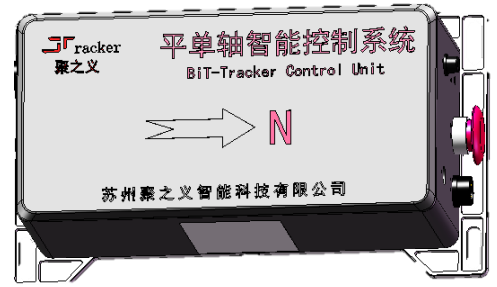
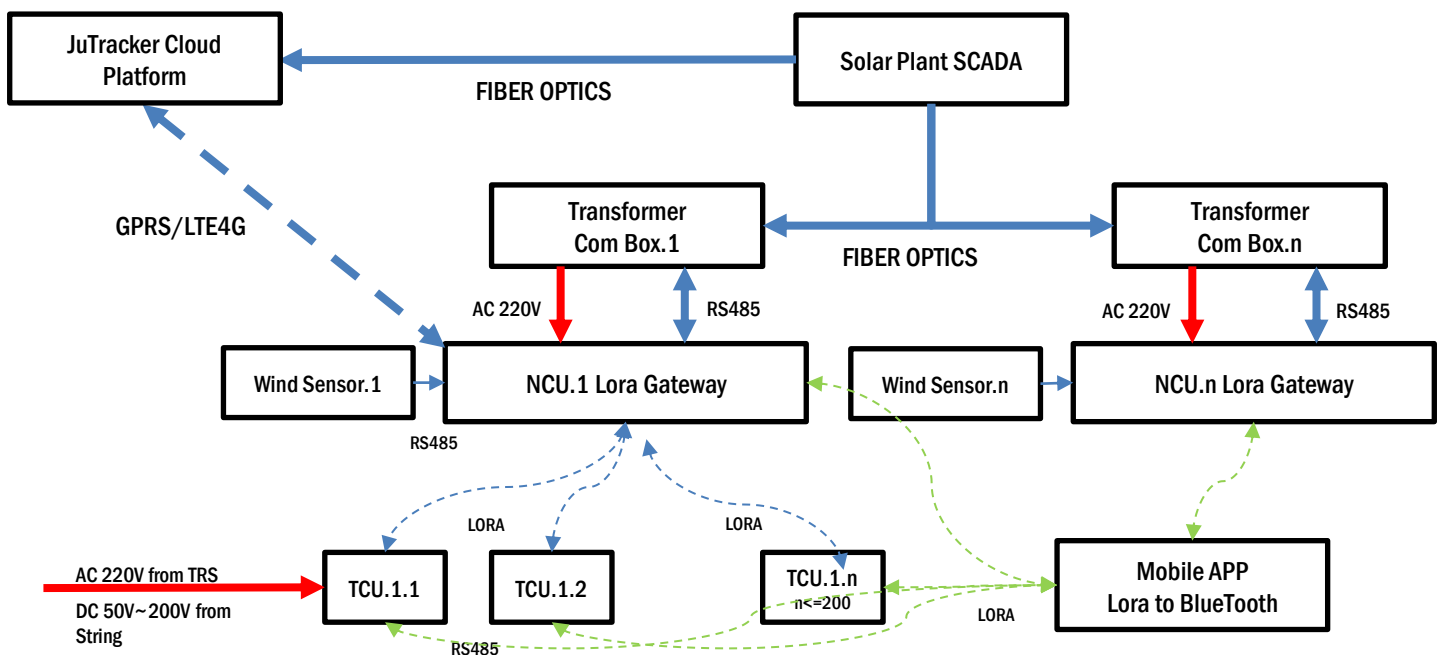


# BiT Tracker Control Unit

## Smart Tracking



- Tracking**  
Astronomical  
Backtracking  
Sensor Control  
Feedback
- Power Supply**  
AC 220V from Trs  
DC from String
- Sensor**  
Angle  
Temp  
DOD Battery
- Communication**  
LoRa  
RS485
- Protection**  
Current  
Voltage  
Angle  
Emergency Stop



<b>Tracker Control Unit</b>		<b>TCU</b>
<b>Controller Electrical Specifications</b>		
<b>Characteristic Parameters</b>		
<b>Input</b>		
String-powered Supply		String-powered (50-200V DC)
External Supply		LV side Transformer(220V AC)
<b>Output</b>		
Working Voltage		DC 24V
Rated Output Current		6A
Max. Output Current		10A
<b>Battery</b>		
Battery Type		Lithium-ion Battery
Battery Capacity (String-powered supply)		6500mAh
<b>Power Consumption</b>		
Daily Energy Consumption		0.2 kWh/Day
<b>Smart Controlling</b>		
Tracking Algorithm		SmartTrack
Rainy Cleaning Mode		Yes
Snow Mode		Yes
Hail Pattern		Yes
Wind Protection		Multi-Level Wind Protection
Reset Protection at Night Parking		Yes
Rotation Limit Protection		Yes
Motor Overcurrent Protection		Yes
Manual/Automatic Tracking Mode		Yes
Emergency Button		Yes
<b>General Data</b>		
Certification		CE,IEC,TUV
Environment Temperature		-40 °C ~ 60 °C
Tracking Angle		Up to ±60 °
Tracking Accuracy		< ±1 °
Wireless Communication		LoRa
Wire communication		RS485
Protection Level		IP65
Weight		<3kg
Dimensions		300*170*80mm(L*W*H)
* Standard configuration. Different conditions under request, please consult Jutracker		



WIND ENGINEERING CONSULTANTS

