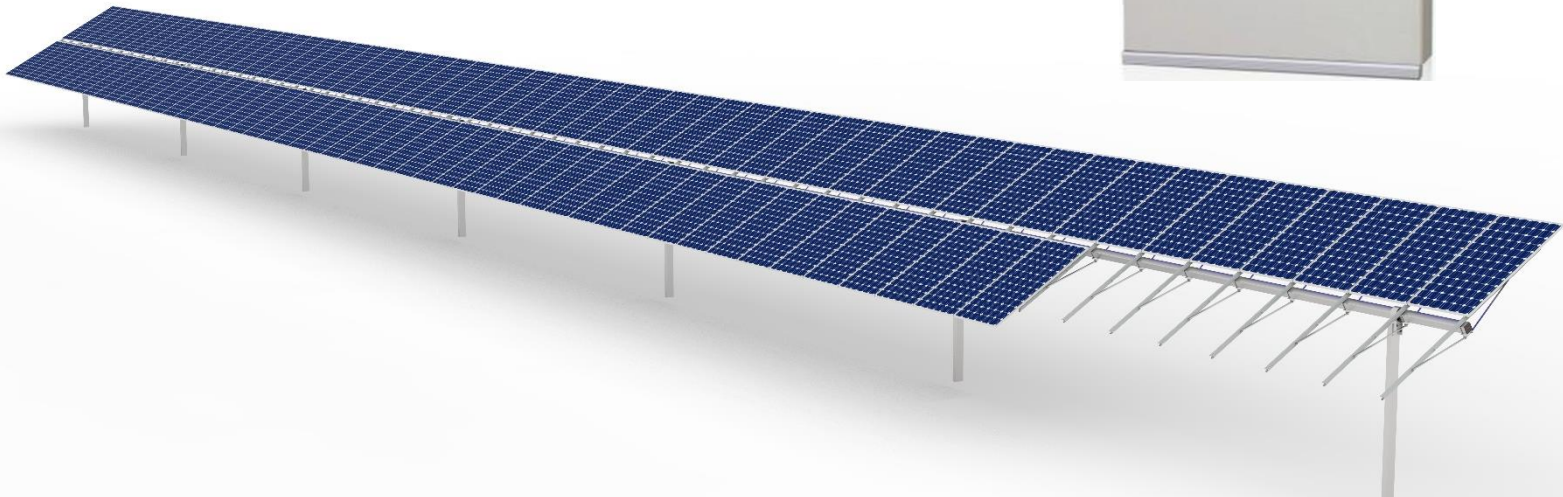





BiT Network Control Unit


Reliable Network



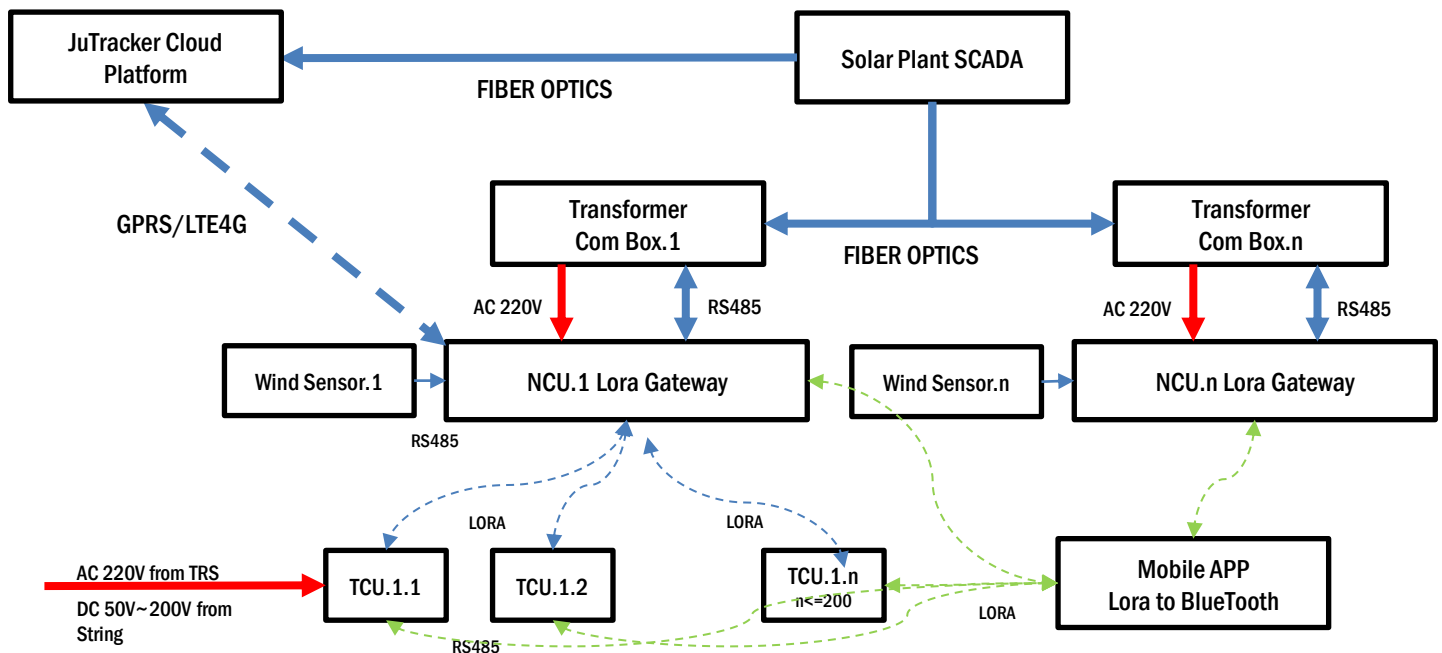
- 

Control
Automatic
Manual
- 

Network
Up to 200 TCU
Weather station
SCADA
- 

Operation Mode
Rain/Snow
Wind
Cleaning
- 

O&M
Wireless
Plugin-Play



Network Control Unit Controller Electrical Specifications	NCU
Characteristic Parameters	
Input	
Power Supply	220 VAC (L+N)
Control	
Control Unit	High speed MCU
Tracking Accuracy	< ±1°
Parameters Setting	PC Software
Power Consumption	
Daily Energy Consumption	<0.1 kWh/Day
Parameters Setting	
GPS Signal	Yes
High Wind Trigger Threshold	PC
Heavy Snow Trigger Threshold	PC
Latitude and Longitude	Automatic
Time Zone (Winter Time)	Manual
Protection and Alarm	
Weather Sensor Alarm	Yes
Communication Interruption With TCU	Yes
GPS Module Failure Alarm	Yes
Communication	
Wireless Communication (with TCU)	LoRa
Protocol	Modbus
Environmental Information	
Wind Speed	Yes
Irradiation	Yes
Snow Thickness Information	Yes
General Data	
Tracker Type	Jutracker BiT
Box Material	Q235B/Aluminum
Installation	Beam Hanging
Enclosure Testing	IP65
Weight	<6kg
Dimensions	380*350*100mm(L*W*H)
Operation Temperature	-40° ~ 60° C(¹)
Altitude	<3000m
* Standard configuration. Different conditions under request, please consult Jutracker	



WIND ENGINEERING CONSULTANTS

